

Ladiz Niroo



Genaral Catalogue





Introduction

Ladiz Niroo Company (**Joint Stock**) was established in 2007 for supplying highly consumed parts in Oil & Gas industries. Due to policy of Oil ministry, EPC, EP and PC projects were surrendered to contractors. This company is attempting to achieve its goal by making new business cooperation with well-known domestic and international manufacturers outside the country. Therefore, we have determined to offer comprehensive services to our customers during budgeting and procuring our projects. Currently, in addition to working in the field of oil, gas and petrochemical industries. we are also active in the fields of power plant & Petrochemical Products exportation.

Beside, we have two subsidiary companies in Europe & UAE to facilitate our above activities.

The services comprise all processes of purchasing such as budgeting and procurements for Oil & Gas and petrochemical products exportation. All affairs have been done with the benefit of skilled staff in commercial and goods technical services in accordance to customers and / or International standards which consist of :

1- Procurements of material and Equipment

- Piping Materials
- Rotary Equipments
- Drilling Equipments

2-Petrochemical Complexes Products exportation out of Iran for Polymers and Chemical products as follows:

A- POLYMERS

- 1- HDPE (High Density Polyethylene)
- 2- LDPE (Low Density Polyethylene)
- 3- LLDPE (Linear Low-Density Polyethylene)
- 4- Polypropylene
- 5- Polybutadiene Rubber (PBR)
- 6- Polyvinyl Chloride (PVC)
- 7- Polyethylene Terephthalate (PET)
- 8- Polystyrene (PS)
- 9- Acrylonitrile Butadiene Styrene (ABS)

B- CHEMICAL PRODUCTS

- 1- OLEFIN Products: Ethylene, Propylene, Hydrogen,
Pyrolysis Gasoline, Fuel Oil (CFO), Methane
- 2- Butene-1
- 3- Butadiene

All of these products will be supplied in various grades with international standards.

1-Piping Materials :

1-1 Pipes

We supply all types of seamless/ERW/welded and fabricated pipes. Materials can be Carbon steel , Steel , Stainless Steel , Alloy Steel , Duplex Steel, Monel and Inconel.

Pipe Types: Seamless ,Welded , SAW, EFW, ERW.



1-2 (Gaskets):

Supply many types of Gaskets for uning in different pressure and temperture.



1-3 Valves :

We can offer all types of valves according to API, ANSI or DIN standards for your requested materials such as:

(Ball Valve)

- ◆ Process valves
- ◆ PFA lined
- ◆ One, two or three pieces
- ◆ Metal seat material
- ◆ 2 , 3 or 4 way
- ◆ With Pneumatic or Electric Actuator



(Globe Valve)



(Gate Valve)



(Check Valve)

- ◆ Swing type
- ◆ Wafer swing type
- ◆ Disc type
- ◆ Dual plate disc
- ◆ Ball type



(Diaphragm Valve)



(Plug Valve)



(Safety Valves)



(Butterfly Valves)

Soft Seated Butterfly Valves

- Centric Design
- Seat Material : EPDM , NBR , VITON , SILICONE
- Disc Material :Stainless Steel , Alloy Steel
- Operation : handlever, Gearbox, Pneumatic and Electric Actuator
- Accessory : Limit switch box, Solenoid Valve for automatic on/off service
- Max.Pressure : 16 bar (working Pressure depends on Working Temperature)
- Standard : DIN , ANSI , API



PTFE Lined Butterfly Valves

- ◆ Centric Design
- ◆ 2 Piece Body
- ◆ Seat Material : PTFE
- ◆ Disc Material : stainless steel 316 / ENCAPSULATED PTFE cast iron
- ◆ Operation : Handlever, Gearbox, Pneumatic and Electric Actuator
- ◆ Accessory : Limit switch box with solenoid valve for automatic on/off service
- ◆ Max.Pressure : 16 bar (working Pressure depends on Working Temperature)
- ◆ Standard : DIN , ANSI , API

High resistance of PTFE against aggressive and corrosive fluids makes it a unique material to utilize in a vast range of hard applications such as transferring all kinds of acids, high temperature media , solid contains media ,etc.



High Performance Butterfly Valves

Double Eccentric

- ◆ Seat Material : stainless steel , PTFE
- ◆ Body Material : stainless steel , A216 WCB
- ◆ Disc and Shaft : stainless steel
- ◆ Operation: Handlever, Gearbox, Pneumatic Actuator , Electric Actuator
- ◆ Accessory : Limit switch box, Solenoid Valve for on/off service and Positioner to use as control valve
- ◆ Max.Temperature : 450 ^C
- ◆ Max. Pressure : 40 bar (depends on working Temperature)
- ◆ Standard : DIN , ANSI , API



(Control Valves)

We offer both type of rotary and slide control valve from best American , west European and Japanese manufacturers for your service.



(Slide Control Valve)



(Rotary Control Valve)



1- 4 Flanges & Fittings

1-4-1 Flanges

We supply all types of flanges as follows:

(Flat Flange)



- 1) Stainless steel flange
- 2) Standard: ANSI, JIS, DIN
- 3) Material: 316L, 304L
- 4) Production with anneal solution for stainless performance.

Welding Neck



(Conflat Flange)



Stainless Steel : ASTM A 182, A 240

Grade : F 304, 304L, 304H, 316, 316L, 316Ti, 310, 310S, 321, 321H, 317, 347, 347H, 904L,
Duplex stainless steel UNS S31803, 2205, Super Duplex stainless steel UNS S32750

Carbon Steel : ASTM A 105, ASTM A 181

Alloy Steel : ASTM A 182, GR F1, F11, F22, F5, F9, F91

Nickel Alloys : Monel 400 & 500, Inconel 600 & 625, Incolloy 800, 825, Hastelloy
C22, C276

Copper Alloys : Copper, Brass & Gunmetal

Size : 1/4" NB To 48" NB.

Class : 150#, 300#, 400 #, 600#, 900#, 1500# & 2500 #.

1-4-2 (Fittings) :

We supply all types of fittings with required Standards and Materials in a wide range of sizes such as:

Flange



Coupling



Elbow



Cross



Nipple



Plug



Union



Tee



Reducer



Cap



Olet



Stainless steel: ASTM A 182, A 240

Grade : F 304, 304L, 304H, 316, 316L, 316Ti, 310, 310S, 321, 321H, 317, 347, 347H, 904L,
Duplex stainless steel UNS S31803, 2205, Super Duplex stainless steel UNS S32750

Carbon Steel : ASTM A 105, ASTM A 181

Alloy Steel : ASTM A 182, GR F1, F11, F22, F5, F9, F91

Nickel Alloys : Monel 400 & 500, Inconel 600 & 625, Incolloy 800, 825, Hastelloy
C22, C276

Copper Alloys : Copper, Brass & Gunmetal

Size : 1/4" NB TO 48"NB.

Class : 150#, 300#, 400 #, 600#, 900#, 1500# & 2500 #.

2- Rotary Equipment

2-1 Pumps :

Regarding the special status of rotating equipments industry, Ladiz Niroo Company has started supplying various equipments as follows:

Pump:

including Centrifugal Pumps, Screw Pumps, Reciprocating Pumps and etc.

2-1-1 Centrifugal Pumps

(Over Hang Pump)



(Fire Fighting Pump)



(Between Bearing Pump)



(Submersible Pump)



(Vertically Suspended)



2-1-2 (Positive Displacement Pumps)

(Diaphragm Dosing Pump)



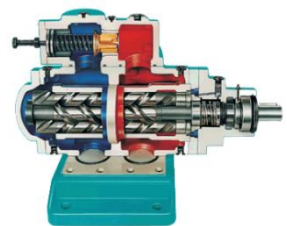
(Piston)



(Gear)

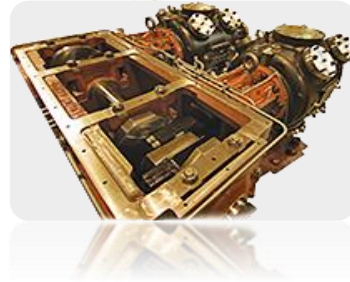


(Screw)



2-2-1 (Compressors)

Including air Compressors, Gas, Oxygen Compressors, Hydrogen Compressors, Nitrogen Compressors and etc.



2-2-2 (Turbines)

Consists all kinds of Turbines, such as : Steam , Gas Turbine, ... etc.





Address: Unit 37,9th Floor, No 22,Golshahr Blvd.,Nelson Mandela (Africa) Ave. Tehran - Iran

Tel: +98 21 22657860, 84 – 88653056 , 61

Fax : +98 21 22657579

Website : www.ladizco.com

Email : ladiz.info@ladizco.com